



Molecular Docking and Molecular Dynamics Simulation Study of Anti-Tuberculosis Drug Candidates from Plant-Derived Natural Products against InhA Protein

Wira Eka Putra^{1,*}, Diana Widiastuti², Arief Hidayatullah³, Muhammad Fikri Heikal⁴, Sustiprijatno⁵, Alyana Mahdavikia Rosyada Yusuf⁴

¹Biotechnology Study Program, Department of Applied Sciences, Faculty of Mathematics and Natural Sciences, Universitas Negeri Malang, East Java 65145, Indonesia

²Department of Chemistry, Faculty of Mathematics and Natural Science, Universitas Pakuan, West Java 16129, Indonesia

³United Nations Development Programme Indonesia, Health Governance Initiative, Jakarta 10430, Indonesia

⁴Department of Biology, Faculty of Mathematics and Natural Sciences, Universitas Negeri Malang, East Java 65145, Indonesia

⁵Research Center for Applied Botany, National Research and Innovation Agency, West Java 10340, Indonesia

Received 6 October 2024; Received in revised form 27 November 2024

Accepted 3 December 2024; Available online 27 December 2024

ABSTRACT

Tuberculosis is an infectious disease caused by *Mycobacterium tuberculosis* and is responsible for millions of deaths worldwide every year. Tuberculosis has become a serious public health problem that needs to be eradicated. Current treatments, including first line medication, have unwanted side effects and face the serious problem of multi-drug resistance. Therefore, finding new agents to treat tuberculosis is critically necessary. Thus, in the present study, we aimed to evaluate several plant-derived drug candidates for their anti-tuberculosis activity that work by inhibiting the activity of the Enoyl acyl carrier protein reductase (InhA) enzyme as determined through in silico studies. Drug-likeness and toxicity evaluation, molecular docking, and molecular dynamics simulations were performed to assess new anti-tuberculosis candidates. Plant-derived natural products such as sulcanal, stigmasterol, zambesiacolactone B, coronarin B, zeylenol, galanal B, and galanolactone might have anti-tuberculosis activity according to their binding affinity scores compared to control drugs. The results revealed that sulcanal had the greatest anti-tuberculosis activity by inhibiting InhA compared to other compounds with the most favorable

binding affinity score and binding interaction properties. Finally, molecular dynamics simulation demonstrated that sulcanal had constant and stable pattern during the initial to terminal stage of the simulation. Finally, we suggest that sulcanal might have the potential for further development as an anti-tuberculosis drug candidate through its InhA inhibition.

Keywords: *In silico*; InhA; *Mycobacterium tuberculosis*; Natural products; Tuberculosis

1. Introduction

Tuberculosis (Tb) is caused by infection of *Mycobacterium tuberculosis* and remains a serious global health problem [1]. It is estimated that 25% of world's population suffer from Tb at some point. Generally, Tb is transmitted through respiratory droplets which can be spread through coughing, sneezing, talking, and direct inhalation of the Tb bacteria. However, it has been reported that Tb can also spread through the mouth, intestines, and skin [2, 3]. Many public health reports have demonstrated that Tb infection is affected by several risk factors including age, gender, environment, education, and disease burden. For instance, Tb is likely to have higher prevalence in the lower socioeconomic rungs and marginalized sections of society [4]. Additionally, the disease burden is greater in populations such as those living with HIV, who are more easily infected with Tb. Similarly, diabetes mellitus also increases the risk of Tb by 2-3 times [5]. Understanding the main factors that affect Tb incidence may help to determine optimal timing for public health prevention or treatment [6, 7].

Recently, several modalities and techniques have been proposed to treat Tb patients including the recombinant mycobacteriophage technique, high throughput screening, signature tagged mutagenesis, transposon site hybridization, three-dimensional cell culture, as well as the use of first line drugs including isoniazid, rifampicin, ethambutol, and pyrazinamide [8, 9]. However, these are accompanied by the growing challenge of multi-drug-resistant bacteria. It has been reported that nearly five-hundred thousand people are infected with the new multi-drug-resistant Tb [9, 10]. In addition, the first line medication of Tb has

unwanted side effects, including liver damage [3]. Unfortunately, new drugs approved for Tb treatment are limited [9]. Therefore, finding new anti-Tb drug candidates is needed.

Medicinal plants have been widely used not only for culinary purposes, but also for treating various ailments [11]. In Indonesia, there exists a commonly prepared herbal medicine known as jamu, which combines a variety of medicinal plants to be taken as a drink. Jamu typically includes *Curcuma xanthorrhiza*, *Curcuma domestica*, *Zingiber aromatica*, *Zingiber officinale*, *Kaempferia pandurata*, and others. These plants contain distinct bioactive compounds that are thought to promote health and address various health conditions. This combination of natural ingredients positions jamu as a holistic and traditional remedy, deeply intertwined with Indonesia's cultural heritage and long-standing practices in herbal medicine [12]. Interestingly, broad studies have demonstrated that plant-derived natural products do have pharmaceutical effects such as anti-inflammation, anti-oxidant, anti-bacteria, anti-virus, and anti-cancer properties [13, 14]. Interestingly, the exploration of plant-derived natural products for anti-tuberculosis treatments is increasing [15, 16]. Therefore, in the present study we aimed to evaluate several plant-derived natural products for their activity as anti-tuberculosis drug candidates that act through Enoyl acyl carrier protein reductase (InhA) enzyme inhibition, as determined through in silico modeling. InhA is widely known as a novel target for anti-tuberculosis activity. The inhibition of InhA activity might result in the disruption of the mycolic acid biosynthesis pathway, which plays an important role in fatty acid metabolism in *M. tuberculosis* [8, 17].

2. Materials and Methods

2.1. Chemical properties and toxicity prediction

Several major bioactive compounds from several medicinal plants such as *Aframomum arundiaceum*, *Aframomum latifolium*, *Aframomum zambesiaceum*, *Boesenbergia rotunda*, *Kaempferia marginata*, and *Kaempferia rotunda* were used in this study [18, 19]. The SMILE information of bioactive compounds was retrieved from the PubChem database (<https://pubchem.ncbi.nlm.nih.gov/>) which included sulcanal (CID. 21604870), stigmaterol (CID. 5280794), zambesiacolactone B (CID. 11624798), coronarin B (CID. 72702906), zeylenol (CID. 10992619), galanal B (CID. 3086504), galanolactone (CID. 11141699), and hemanthidine (CID. 3002914). The chemical information of these bioactive compound were retrieved from SwissADME webserver (<http://www.swissadme.ch/>). Furthermore, ProTox 3.0. webserver (<https://tox.charite.de/prottox3/>) was employed to perform toxicity level predictions and the determine the probability of these compounds to induce toxicity.

2.2. Ligand structure preparation

The chemical structures of the bioactive compounds were retrieved from PubChem database which included sulcanal, stigmaterol, zambesiacolactone B, coronarin B, zeylenol, galanal B, galanolactone, and hemanthidine. Additionally, isoniazid (CID. 3767) and ethionamide (CID. 2761171) were used as control drugs for InhA inhibition [9]. Finally, all chemical structures of the bioactive compounds and control drugs were saved in SDF format for further use in molecular docking.

2.3. Target protein preparation

The 3D structure of InhA, the target protein, was obtained from RCSB Protein Data Bank (<https://www.rcsb.org/>) with PDB ID 2IED. The data was saved in PDB. format for

further molecular docking. Cleaning and optimization of the InhA structure was performed using PyMOL software (<https://www.pymol.org/>).

2.4. Molecular docking and visualization

After performing ligand and target protein optimization, molecular docking was conducted using PyRx 0.8 software (<https://pyrx.sourceforge.io/>). The docking grid was set to cover the entire surface of InhA with the following dimensions: X=75.5359Å, Y= 78.6879Å, dan Z= 85.7672Å. Data analysis and visualization of molecular docking results was done using Discovery Studio software (<https://www.3ds.com/>).

2.5. Molecular dynamics simulation

Molecular dynamics analysis was performed to validate the stability of the protein-ligand complex after molecular docking. Simulation of the protein-ligand complexes was performed using YASARA software (<http://www.yasara.org/>) for 3500 ps. Some parameters were measured including total energy, Coulomb energy, RMSD, SASA, surface molecule, surface VdW, radius gyration, and H-Bond.

3. Results and Discussion

The bioactive compounds used in this study were varied and originated from different types of medicinal plants. Interestingly, many of the bioactive compounds had the common feature of aromatic rings (Fig. 1A). To proceed with the molecular docking process, we evaluated the chemical properties of these bioactive compounds which included the molecular weight, number of rotatable bonds, number of H-bond acceptors, number of H-bond donors, and molar refractivity (Fig. 1B). These evaluations were very important to determine the drug-likeness properties of these compounds, which were then used for molecular docking.

The drug-likeness screening has been widely occupied in selection and finding new

drug candidate from non-drug compounds. In other words, drug-likeness screening is the process of finding the similarities between drug candidates and established drugs [20].

Drug-likeness screening is very important in drug discovery as it can reduce both the experimental expenditure and the time required for the study [21, 22].

A

B

Compounds	Formula	Molecular weight	Num. rotatable bonds	Num. H-bond acceptors	Num. H-bond donors	Molar Refractivity
Sulcanal	C39H56O4	588.86 g/mol	6	4	1	175.97
Stigmasterol	C29H48O	412.69 g/mol	5	1	1	132.75
Zambesiacolactone B	C20H30O6	366.45 g/mol	2	6	3	94.7
Coronarin B	C20H30O4	334.45 g/mol	2	4	1	93.98
Zeylenol	C21H20O7	384.38 g/mol	7	7	3	98.3
Galanal B	C20H30O3	318.45 g/mol	2	3	1	92.22
Galanolactone	C20H30O3	318.45 g/mol	2	3	0	91.21
Hemanthidine	C17H19NO5	317.34 g/mol	1	6	2	84.18

Fig. 1. Chemical information of the bioactive compounds used. A). chemical structures of bioactive compounds. B). Physicochemical properties of the bioactive compounds.

After reviewing drug-likeness of the bioactive compounds, toxicity prediction was performed. Toxicity class and LD₅₀ prediction, including the probability score of bioactive compounds to induce toxicity, was analyzed. Zambesiacolactone B and zeylenol were predicted to be in toxicity class 5. Sulcanal, stigmasterol, galanal B, and galanolactone were predicted to be in toxicity class 4. Coronarin B and hemanthidine were predicted

to be in toxicity class 3 (Fig. 2A). A lower number for the toxicity class indicates the compounds exhibit more toxic activity. For the analysis of probability to induce toxicity, almost all of the compounds were determined to be safe. Several compounds though, such as zambesiacolactone B, galanal B, galanolactone, and hemanthidine, demonstrated potential carcinogenicity or cytotoxicity (Fig. 2B).

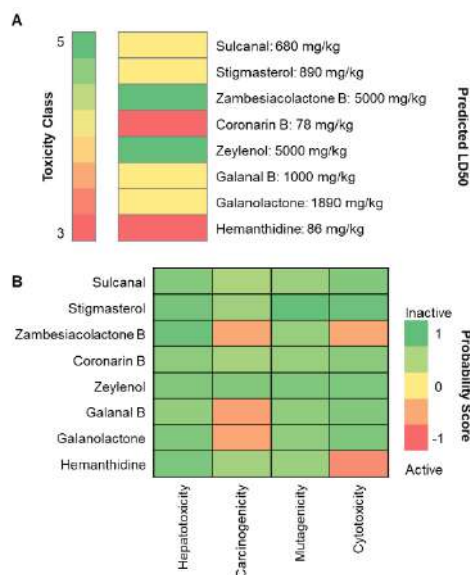


Fig. 2. Toxicity prediction of the bioactive compounds. A). Toxicity evaluation based on LD₅₀ value, and B). The probability of causing toxicity in some physiological aspects.

Besides the evaluation of chemical structures and properties, toxicity evaluation is also widely used for screening drug candidates. Toxicity prediction offers a possible range of doses for certain compounds

and can also predict the possibility of induced toxicity to organs [23, 24]. Importantly, toxicity prediction allows researchers to effectively estimate the number of cells or animal models needed for experiments.

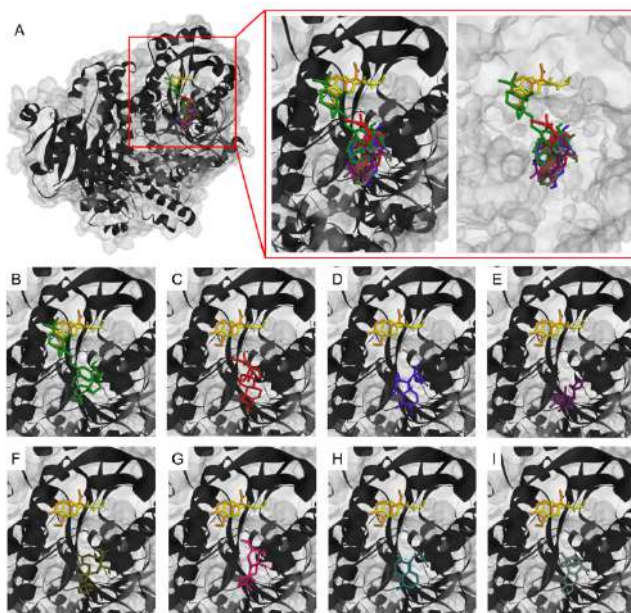


Fig. 3. The 3D structure visualization of bioactive compounds and control drugs toward InhA (A). Single view of compound and control drugs including sulcanal (B); stigmasterol (C); zambesiacolactone B (D); coronarin B (E); zeylenol (F); galanal B (G); galanolactone (H); and hemanthidine (I) binds to InhA. The control drugs are represented in yellow and orange.

According to molecular docking, the bioactive compounds in this study demonstrated competitive inhibitory activity. The 3D visualization showed that the bioactive compounds have a similar binding area to the control drugs used in this study (Fig. 3). In

addition, the binding interactions, such as H-bonding and Van der Waals interaction are formed between the protein-ligand (Fig. 4, Fig. 5). These indicate that the bioactive compounds might contribute to changes in InhA bioactivity.

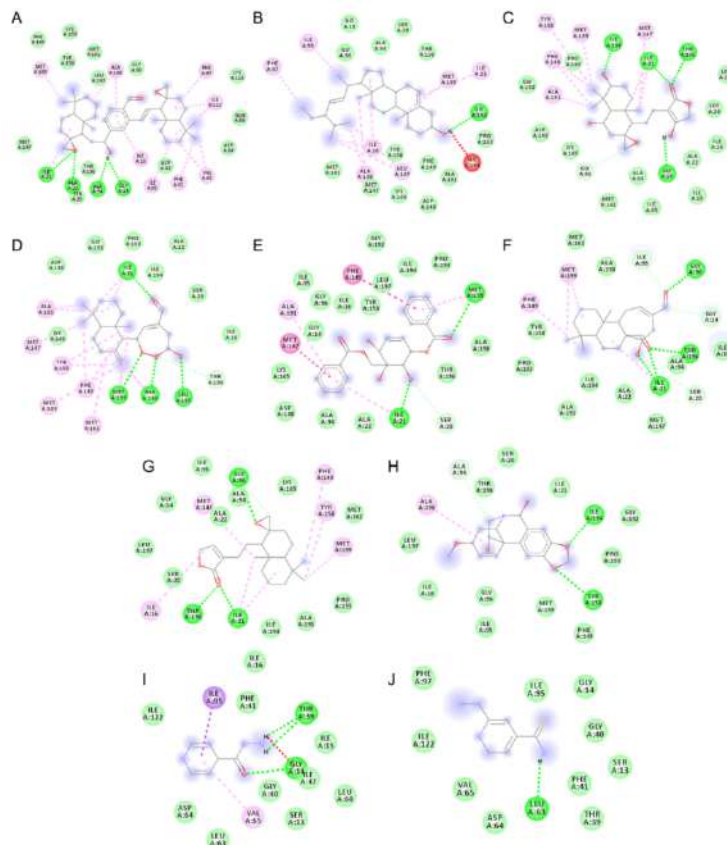


Fig. 4. The 2D structure and interaction visualization of sulcanal (A); stigmasterol (B); zambesiacolactone B (C); coronarin B (D); zeylenol (E); galanal B (F); galanolactone (G); hemanthidine (H); isoniazid (I); and ethionamide (J) bound to InhA.

Interestingly, of all the bioactive compounds, sulcanal demonstrated the most favorable binding affinity, with a ΔG value of -12.7 kcal/mol, indicating its strong interaction potential with the target protein. Following sulcanal, stigmasterol showed a notable binding affinity of -10.0 kcal/mol, making it the second most promising candidate. Compounds such as zambesiacolactone B (-9.8 kcal/mol), coronarin B (-9.5 kcal/mol), zeylenol (-9.3 kcal/mol), and galanal B (-9.3 kcal/mol) also exhibited strong binding interactions, albeit slightly less potent than

sulcanal and stigmasterol. Galanolactone (-9.2 kcal/mol) and hemanthidine (-9.0 kcal/mol) followed closely, maintaining significant binding potential (Table 1). In comparison, isoniazid and ethionamide both displayed much weaker binding affinities, with ΔG values of -5.6 kcal/mol. These findings suggest that the bioactive compounds, particularly sulcanal, offer favorable binding capabilities compared to the control drugs, underscoring their potential as effective therapeutic candidates for further molecular and pharmacological studies.

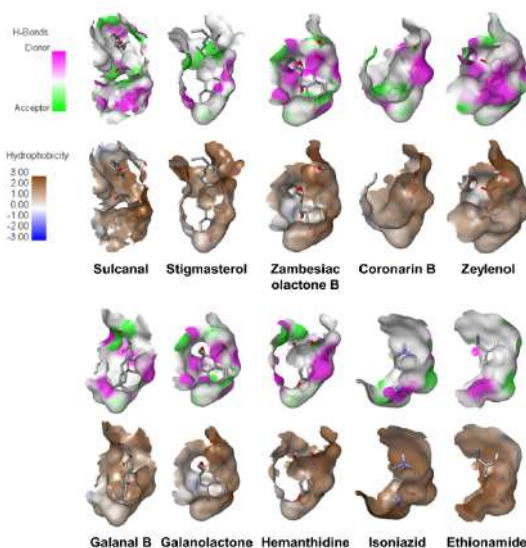


Fig. 5. The physicochemical properties of bioactive compounds and control drug toward InhA, including aromatic properties, interpolated charge, hydrophobicity, ionizability, and SAS properties.

Table 1. List of binding affinity values, chemical interactions, and amino acid residues of the bioactive compounds and control drugs toward InhA.

Compound	Amino Acids Residue	Interaction
Sulcanal ΔG: -12.7 kcal/mol	Ile21(A); Ala22(A); Ala94(A); Gly14(A) Thr196(A); Ser20(A); Met147(A); Phe149(A); Tyr158(A); Lys165(A); Met161(A); Leu197(A); Gly96(A); Lys118(A); Gln66(A); Asp64(A); Asp42(A)	H-bond Van der Waals
<i>Aframomum latifolium</i> Stigmasterol ΔG: -10.0 kcal/mol	Gly192(A) Pro193(A); Ala191(A); Asp148(A); Phe149(A); Lys165(A); Tyr158(A); Met147(A); Met161(A); Gly96(A); Gly14(A); Ala94(A); Ser20(A); Thr196(A)	Hydrogen Bond Van der Waals
<i>Kaempferia marginata</i> Zambesiactolactone B ΔG: -9.8 kcal/mol	Ile94(A); Ile21(A); Thr196(A); Gly14(A) Leu197(A); Ser20(A); Ile16(A); Ala22(A); Ile15(A); Ala94(A); Ile95(A); Met161(A); Gly96(A); Lys165(A); Asp148(A); Gly192(A); Pro193(A)	Hydrogen Bond Van der Waals
<i>Aframomum zambesiacum</i> Coronararin B ΔG: -9.5 kcal/mol	Ile21(A); Leu197(A); Ala198(A); Met199(A) Thr196(A); Lys165(A); Asp148(A); Gly192(A); Pro193(A); Ala22(A); Ile194(A); Ser20(A); Ile16(A)	Hydrogen Bond Van der Waals
<i>Aframomum latifolium</i> Zeylenol ΔG: -9.3 kcal/mol	Met199(A); Ile21(A) Ala198(A); Thr196(A); Ser20(A); Ala22(A); Ala94(A); Asp148(A); Lys165(A); Gly14(A); Ile95(A); Gly96(A); Ile16(A); Tyr158(A); Leu197(A); Ile194(A); Gly192(A); Pro193(A)	Hydrogen Bond Van der Waals
<i>Kaempferia rotunda</i> Galanal B ΔG: -9.3 kcal/mol	Gly96(A); Thr196(A); Ile21(A) Gly14(A); Ile16(A); Ala94(A); Ser20(A); Met147(A); Ala22(A); Ile194(A); Ala191(A); Pro193(A); Tyr158(A); Met161(A); Ala198(A); Ile95(A)	Hydrogen Bond Van der Waals
<i>Aframomum latifolium</i> Galanolactone ΔG: -9.2 kcal/mol	Gly96(A); Ile21(A); Thr196(A) Met161(A); Pro193(A); Ala191(A); Ile194(A); Ser20(A); Leu197(A); Ala22(A); Gly14(A); Ala94(A); Ile95(A); Lys165(A)	Hydrogen Bond Van der Waals
<i>Aframomum arundiaceum</i> Hemanthidine ΔG: -9.0 kcal/mol	Ile194(A); Tyr158(A) Gly192(A); Pro193(A); Phe149(A); Met199(A); Gly96(A); Ile95(A); Ile16(A); Leu197(A); Thr196(A); Ala94(A); Ser20(A); Ile21(A)	Hydrogen Bond Van der Waals
<i>Boesenbergia rotunda</i> Isoniazid ΔG: -5.6 kcal/mol	Thr39(A); Gly14(A) Ile15(A); Ile47(A); Leu60(A); Ser13(A); Gly40(A); Leu63(A); Asp64(A); Ile122(A); Ile16(A); Phe41(A)	Hydrogen Bond Van der Waals
Ethionamide ΔG: -5.6 kcal/mol	Leu63(A) Ile95(A); Gly14(A); Gly40(A); Ser13(A); Phe41(A); Thr39(A); Asp64(A); Val65(A); Phe97(A); Ile122(A)	Hydrogen Bond Van der Waals

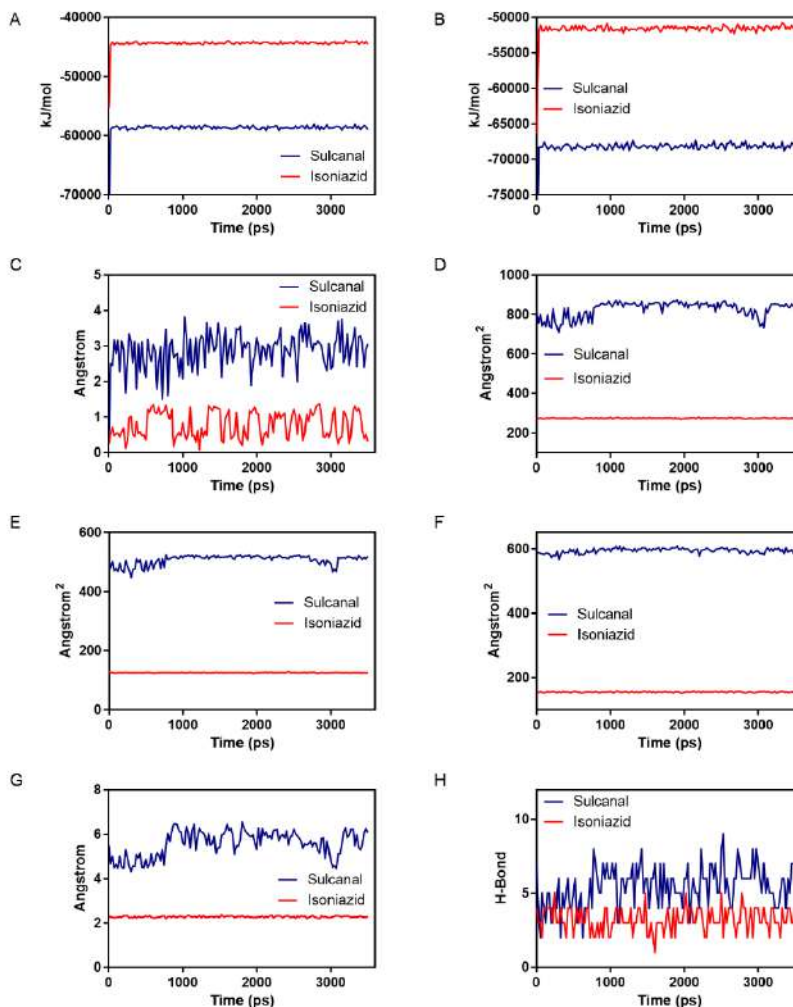


Fig. 6. Molecular dynamic simulations of InhA - sulcanal and InhA- isoniazid complexes. A). Total energy, B). Coulomb energy, C). RMSD, D). SASA, E). Surface molecule, F). Surface VdW, G). Radius gyration, and H). H-Bond.

Molecular docking is a widely used technique in drug discovery research. Molecular docking helps researchers to identify binding affinity and the interactions formed between the ligand and target protein. The interactions formed between the ligand and target protein thus enable researchers not only to explore the properties of the ligand in the binding area, but also to define the basic biochemical activity within the interaction [25, 26].

Molecular docking provides the prediction of binding affinity scores which

estimates binding conformation between the ligand and target protein [27-29]. Furthermore, molecular docking also provides the prediction of chemical interactions formed between the ligand and target protein. H-bond and hydrophobic interactions play a crucial role in maintaining interaction stability. More than that, hydrophobic interactions have been demonstrated to be involved in many chemical and biological phenomena, such as molecular recognition, protein folding, biological membranes, surfactant aggregation, and more [30].

Molecular dynamic simulations play an important role in determining the stability of protein-ligand complex interactions. During the time-dependent simulation, we could monitor how the ligand behaves toward the target protein, whether it maintains its interaction or it disassociates. A favorable drug candidate should have consistent and stable interactions with the target protein, therefore their therapeutic benefit toward the target protein could be optimized. According to our molecular dynamics simulations, we found almost all parameters, including total energy, Coulomb energy, RMSD, SASA, surface molecule, surface VdW, radius gyration, and H-Bond, had constant values for both sulcanal and isoniazid against InhA. However, in all parameters except H-bonding, the values between sulcanal and isoniazid against InhA were different (Fig. 6).

Molecular dynamics simulations could predict protein behavior or ligand stability during time-dependent simulations. The simulation could provide insight into several biomolecular processes including conformational change, ligand binding, and protein structure stability. The results from molecular dynamics simulations enable researchers to optimize the compounds for getting the best performance and stability during interaction with the target proteins [31-33].

The present study faced some limitations. First, using web-based tools with diverse algorithms can result in inconsistent outcomes. Furthermore, when conducting docking studies, it is critical to focus on specific binding sites in order to more accurately predict the biological activity of the drugs. A further limitation is the instrument-constrained short simulation time of less than 10 ns. Future studies should strive to extend the simulation period to obtain more precise results. Finally, conducting experimental assessments, including *in vitro* and *in vivo* studies, is crucial for evaluating the potency of compounds against InhA as potential anti-TB drug candidates. These studies are crucial for

validating the efficacy and therapeutic potential of the compounds.

4. Conclusion

Plant-derived natural products such as sulcanal, stigmasterol, zambesiacolactone B, coronarin B, zeulenol, galanin B, and galanolactone might have anti-tuberculosis activity. To a greater extent, *in silico* analysis including toxicity predictions and molecular docking indicated sulcanal to have the greatest favorability as an anti-tuberculosis drug candidate through InhA inhibition, as compared to other tested compounds, including the control drugs. Finally, molecular dynamics simulations indicated sulcanal has a constant and stable pattern of interaction during the initial to terminal stage of simulations.

Acknowledgements

The authors would like to thank Universitas Negeri Malang for their support of this study.

References

- [1] Shang W, Cao G, Jing W, Liu J, Liang W, Liu M. Global Burden of Tuberculosis in Adolescents and Young Adults: 1990-2019. *Pediatrics*. 2024 Apr 1;153(4):e2023063910.
- [2] Bai W, Ameyaw EK. Global, regional and national trends in tuberculosis incidence and main risk factors: a study using data from 2000 to 2021. *BMC Public Health*. 2024 Jan 2;24(1):12.
- [3] Suárez I, Fünfer SM, Kröger S, Rademacher J, Fätkenheuer G, Rybniker J. The Diagnosis and Treatment of Tuberculosis. *Dtsch Arztebl Int*. 2019 Oct 25;116(43):729-35.
- [4] Natarajan A, Beena PM, Devnikar AV, Mali S. A systemic review on tuberculosis. *Indian J Tuberc*. 2020 Jul;67(3):295-311.
- [5] Giri S, Sahu P, Kanungo S, Bal HB, Kumar S, Kar S, Mohanty T, Turuk J, Das D, Hota PK, Pati S. Diabetes mellitus and human immunodeficiency virus (HIV) infection in

- people with tuberculosis in Odisha, India. *Indian J Tuberc.* 2024 Apr;71(2):147-52.
- [6] Suhairi MH, Mohamad M, Isa MR, Mohd Yusoff MAS, Ismail N. Risk factors for tuberculosis-related death among adults with drug-sensitive pulmonary tuberculosis in Selangor, Malaysia from 2013 to 2019: a retrospective cohort study using surveillance data. *BMJ Open.* 2024 Feb 26;14(2):e080144.
- [7] Reichler MR, Khan A, Sterling TR, Zhao H, Chen B, Yuan Y, Moran J, McAuley J, Mangura B; Tuberculosis Epidemiologic Studies Consortium Task Order 2 Team. Risk Factors for Tuberculosis and Effect of Preventive Therapy Among Close Contacts of Persons With Infectious Tuberculosis. *Clin Infect Dis.* 2020 Apr 10;70(8):1562-72.
- [8] Prasad MS, Bhole RP, Khedekar PB, Chikhale RV. Mycobacterium enoyl acyl carrier protein reductase (InhA): A key target for antitubercular drug discovery. *Bioorg Chem.* 2021 Oct;115:105242.
- [9] Armstrong T, Lamont M, Lanne A, Alderwick LJ, Thomas NR. Inhibition of Mycobacterium tuberculosis InhA: Design, synthesis and evaluation of new di-triclosan derivatives. *Bioorg Med Chem.* 2020 Nov 15;28(22):115744.
- [10] Peloquin CA, Davies GR. The Treatment of Tuberculosis. *Clin Pharmacol Ther.* 2021 Dec;110(6):1455-66.
- [11] Sofowora A, Ogunbodede E, Onayade A. The role and place of medicinal plants in the strategies for disease prevention. *Afr J Tradit Complement Altern Med.* 2013 Aug 12;10(5):210-29.
- [12] Elfahmi N, Woerdenbag HJ, Kayser O. Jamu: Indonesian traditional herbal medicine towards rational phytopharmacological use. *J HerMed.* 2014; 4(2): 51-73.
- [13] Roy A, Khan A, Ahmad I, Alghamdi S, Rajab BS, Babalghith AO, Alshahrani MY, Islam S, Islam MR. Flavonoids a Bioactive Compound from Medicinal Plants and Its Therapeutic Applications. *Biomed Res Int.* 2022 Jun 6;2022:5445291.
- [14] Tungmunnithum D, Thongboonyou A, Pholboon A, Yangsabai A. Flavonoids and Other Phenolic Compounds from Medicinal Plants for Pharmaceutical and Medical Aspects: An Overview. *Medicines (Basel).* 2018 Aug 25;5(3):93.
- [15] Fatima S, Kumari A, Dwivedi VP. Advances in adjunct therapy against tuberculosis: Deciphering the emerging role of phytochemicals. *MedComm (2020).* 2021 Aug 5;2(4):494-513.
- [16] Gupta VK, Kumar MM, Bisht D, Kaushik A. Plants in our combating strategies against Mycobacterium tuberculosis: progress made and obstacles met. *Pharm Biol.* 2017 Dec;55(1):1536-44.
- [17] Manjunatha UH, S Rao SP, Kondreddi RR, Noble CG, Camacho LR, Tan BH, Ng SH, Ng PS, Ma NL, Lakshminarayana SB, Herve M, Barnes SW, Yu W, Kuhen K, Blasco F, Beer D, Walker JR, Tonge PJ, Glynne R, Smith PW, Diagana TT. Direct inhibitors of InhA are active against Mycobacterium tuberculosis. *Sci Transl Med.* 2015 Jan 7;7(269):269ra3.
- [18] Elshamy AI, Mohamed TA, Essa AF, Abd-ElGawad AM, Alqahtani AS, Shahat AA, Yoneyama T, Farrag ARH, Noji M, El-Seedi HR, Umeyama A, Paré PW, Hegazy MF. Recent Advances in Kaempferia Phytochemistry and Biological Activity: A Comprehensive Review. *Nutrients.* 2019 Oct 7;11(10):2396.
- [19] Rosdianto AM, Puspitasari IM, Lesmana R, Levita J. Bioactive compounds of Boesenbergia sp. and their anti-inflammatory mechanism: A review. *JAPS.* 2020; 10(7), 116-26.
- [20] Wei W, Cherukupalli S, Jing L, Liu X, Zhan P. Fsp3: A new parameter for drug-likeness. *Drug Discov Today.* 2020 Oct;25(10):1839-45.

- [21] Sun J, Wen M, Wang H, Ruan Y, Yang Q, Kang X, Zhang H, Zhang Z, Lu H. Prediction of drug-likeness using graph convolutional attention network. *Bioinformatics*. 2022 Nov 30;38(23):5262-9.
- [22] Tian S, Wang J, Li Y, Li D, Xu L, Hou T. The application of in silico drug-likeness predictions in pharmaceutical research. *Adv Drug Deliv Rev*. 2015 Jun 23;86:2-10.
- [23] Banerjee P, Kemmler E, Dunkel M, Preissner R. ProTox 3.0: a webserver for the prediction of toxicity of chemicals. *Nucleic Acids Res*. 2024 Jul 5;52(W1):W513-W20.
- [24] Fūzi B, Mathai N, Kirchmair J, Ecker GF. Toxicity prediction using target, interactome, and pathway profiles as descriptors. *Toxicol Lett*. 2023 May 15;381:20-6.
- [25] Agu PC, Afiukwa CA, Orji OU, Ezeh EM, Ofoke IH, Ogbu CO, Ugwuja EI, Aja PM. Molecular docking as a tool for the discovery of molecular targets of nutraceuticals in diseases management. *Sci Rep*. 2023 Aug 17;13(1):13398.
- [26] Chen G, Seukep AJ, Guo M. Recent Advances in Molecular Docking for the Research and Discovery of Potential Marine Drugs. *Mar Drugs*. 2020 Oct 30;18(11):545.
- [27] Abdel-Rehim A, Orhobor O, Hang L, Ni H, King RD. Protein-ligand binding affinity prediction exploiting sequence constituent homology. *Bioinformatics*. 2023 Aug 1;39(8):btad502.
- [28] Hidayatullah A, Putra WE, Sustiprijatno, Permatasari GW, Salma WO, Widiastuti D, Susanto H, Muchtaromah B, Sari DRT, Ningsih FN, Heikal MF, Yusuf AMR, Arizona AS. In silico targeting DENV2's prefusion envelope protein by several natural products' bioactive compounds. *CMUJNS*. 2021; 20(3): 1-20.
- [29] Putra WE. In silico study demonstrates multiple bioactive compounds of sambucus plant promote death cell signaling pathway via FAS receptor. *FTSTJ*. 2018; 3(2): 682-5.
- [30] Sun Q. The Hydrophobic Effects: Our Current Understanding. *Molecules*. 2022 Oct 18;27(20):7009.
- [31] Hollingsworth SA, Dror RO. Molecular Dynamics Simulation for All. *Neuron*. 2018 Sep 19;99(6):1129-43.
- [32] Hidayatullah A, Putra WE, Sustiprijatno, Widiastuti D, Salma WO, Heikal MF. Molecular docking and molecular dynamics simulation-based identification of natural inhibitors against druggable human papilloma virus type 16 target. *Trends Sci*. 2023; 20(4): 1-12.
- [33] Hidayatullah A, Putra WE, Rifa'i M, Sustiprijatno, Widiastuti D, Heikal MF, Susanto H, Salma WO. Molecular docking and dynamics simulation studies to predict multiple medicinal plants' bioactive compounds interaction and its behavior on the surface of DENV-2 E protein. *Karbala Int. J. Mod. Sci*. 2022; 8(3): 531-42.